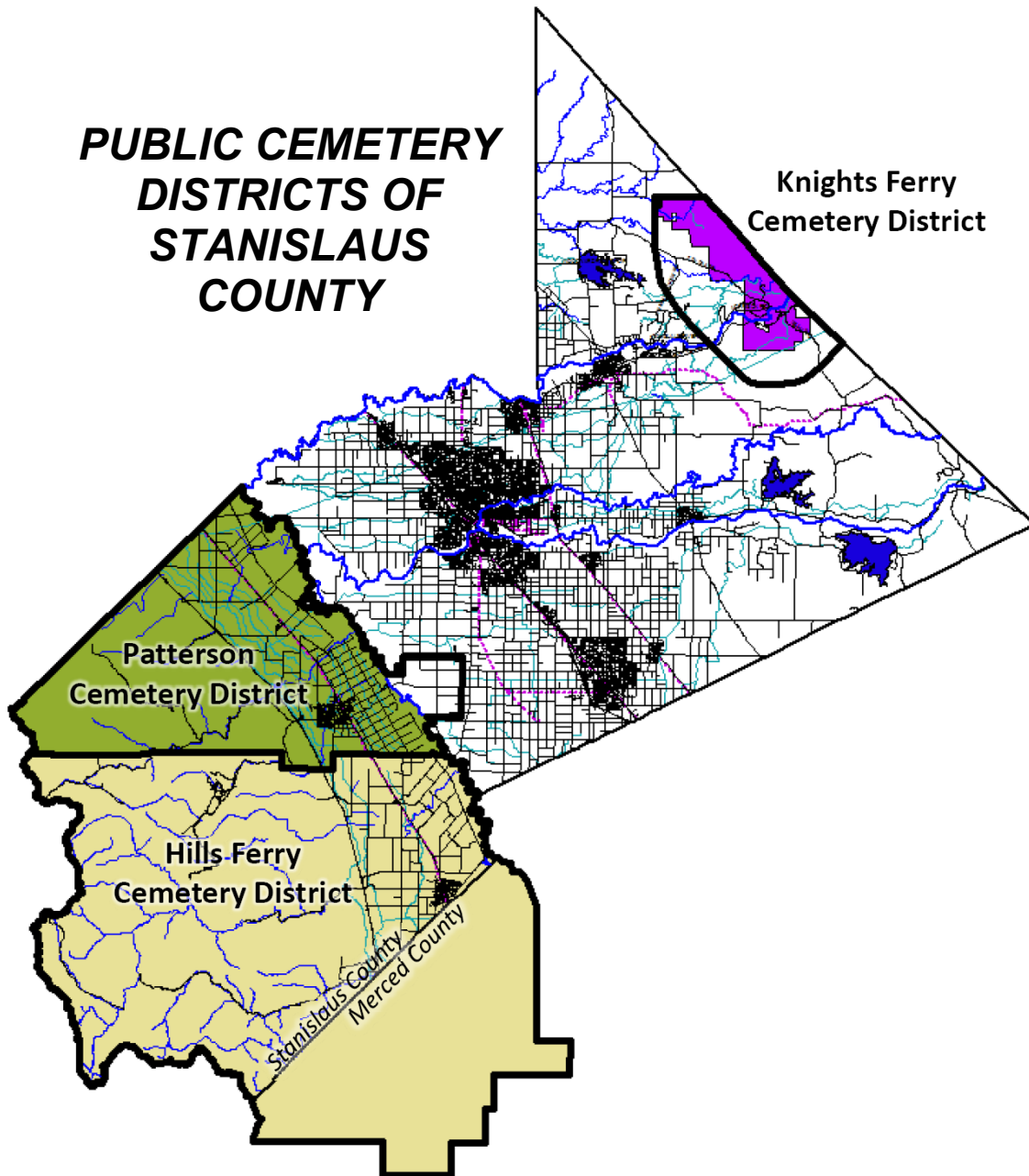


**MUNICIPAL SERVICE REVIEW AND
SPHERE OF INFLUENCE UPDATE FOR**

**PUBLIC CEMETERY
DISTRICTS OF
STANISLAUS
COUNTY**



Stanislaus Local Agency Formation Commission
1010 Tenth Street, Third Floor
Modesto, CA 95354
Phone: (209) 525-7660

Adopted: April 24, 2024

STANISLAUS
LOCAL AGENCY FORMATION COMMISSION

COMMISSIONERS

Amy Bublak, City Member
Richard O'Brien, City Member
Vito Chiesa, County Member
Terry Withrow, County Member
Ken Lane, Public Member
Javier Lopez, Alternate City Member
Mani Grewal, Alternate County Member
Bill Berryhill, Alternate Public Member

STAFF

Sara Lytle-Pinhey, Executive Officer
Javier Camarena, Assistant Executive Officer
Jennifer Vieira, Commission Clerk
Shaun Wahid, Commission Counsel

TABLE OF CONTENTS

Introduction	1
Municipal Service Review Factors to be Addressed	1
Sphere of Influence Update Process	2
Authority	2
Classification of Services.....	3
Hills Ferry Cemetery District.....	4
Formation	4
Location and Size	4
Sphere of Influence	4
Governance.....	4
Personnel	4
Support Agencies	4
Funding Sources	4
Services	5
Capacity	5
Municipal Service Review Determinations	6
Growth and Population Projections.....	6
Location and Characteristics of Disadvantaged Unincorporated Communities	6
Present and Planned Capacity of Public Facilities, Adequacy of Public Services	6
Financial Ability of Agencies to Provide Services.....	6
Status of, and Opportunities for, Shared Facilities	6
Accountability for Community Service Needs	7
Any Other Matter Related to Effective or Efficient Service Delivery	7
Sphere of Influence Determinations	8
Present and Planned Land Uses	8
Present and Probable Need for Public Facilities and Services.....	8
Present Capacity of Public Facilities and Adequacy of Public Services	8
Communities of Interest in the Area.....	8
Need for Public Facilities in Disadvantaged Unincorporated Communities	8
Hills Ferry Cemetery District Summary Profile	9
Hills Ferry Cemetery District Map	10
Knights Ferry Cemetery District	11
Formation	11
Location and Size	11
Sphere of Influence	11
Governance.....	11
Personnel	11
Support Agencies	11
Funding Sources	11
Services	12
Capacity	12
Municipal Service Review Determinations	13
Growth and Population Projections.....	13
Location and Characteristics of Disadvantaged Unincorporated Communities	13
Present and Planned Capacity of Public Facilities, Adequacy of Public Services	13

TABLE OF CONTENTS (Cont.)

Financial Ability of Agencies to Provide Services.....	13
Status of, and Opportunities for, Shared Facilities	13
Accountability for Community Service Needs	13
Any Other Matter Related to Effective or Efficient Service Delivery	14
Sphere of Influence Determinations	15
Present and Planned Land Uses	15
Present and Probable Need for Public Facilities and Services.....	15
Present Capacity of Public Facilities and Adequacy of Public Services	15
Communities of Interest in the Area.....	15
Need for Public Facilities in Disadvantaged Unincorporated Communities	15
Knights Ferry Cemetery District Summary Profile.....	16
Knights Ferry Cemetery District Map.....	17
Patterson Cemetery District	18
Formation	18
Location and Size	18
Sphere of Influence	18
Governance.....	18
Personnel.....	18
Support Agencies	18
Funding Sources	18
Services	19
Capacity	19
Municipal Service Review Determinations	20
Growth and Population Projections.....	20
Location and Characteristics of Disadvantaged Unincorporated Communities	20
Present and Planned Capacity of Public Facilities, Adequacy of Public Services	20
Financial Ability of Agencies to Provide Services.....	20
Status of, and Opportunities for, Shared Facilities	20
Accountability for Community Service Needs	20
Any Other Matter Related to Effective or Efficient Service Delivery	21
Sphere of Influence Determinations	22
Present and Planned Land Uses	22
Present and Probable Need for Public Facilities and Services.....	22
Present Capacity of Public Facilities and Adequacy of Public Services	22
Communities of Interest in the Area.....	22
Need for Public Facilities in Disadvantaged Unincorporated Communities	22
Patterson Cemetery District Summary Profile	23
Patterson Cemetery District Map	24
Appendix D: References.....	25

Municipal Service Review and Sphere of Influence Updates for the Hills Ferry, Knights Ferry, and Patterson Cemetery Districts

Introduction

The Cortese/Knox/Hertzberg Local Government Reorganization Act of 2000 Act (CKH Act) requires the Local Agency Formation Commission (LAFCO) to update the spheres of influence (SOI) for all applicable jurisdictions in the County. A sphere of influence is defined by Government Code 56076 as "...a plan for the probable physical boundary and service area of a local agency, as determined by the Commission." The Act further requires that a municipal service review (MSR) be conducted prior to or, in conjunction with, the update of a sphere of influence (SOI).

The legislative authority for conducting a municipal service review is provided in Government Code Section 56430 of the CKH Act. The Act states, that "in order to prepare and to update spheres of influence in accordance with Section 56425, the commission shall conduct a service review of the municipal services provided in the county or other appropriate area..." MSRs must have written determinations that address the following factors in order to update a Sphere of Influence. These factors were recently amended to include the consideration of disadvantaged unincorporated communities within or contiguous to the sphere of influence of an agency.

Municipal Service Review Factors to be Addressed

1. Growth and Population Projections for the Affected Area
2. The Location and Characteristics of Any Disadvantaged Unincorporated Communities Within or Contiguous to the Sphere of Influence
3. Present and Planned Capacity of Public Facilities, Adequacy of Public Services, and Infrastructure Needs or Deficiencies Including Needs or Deficiencies Related to Sewers, Municipal and Industrial Water, and Structural Fire Protection in Any Disadvantaged, Unincorporated Communities Within or Contiguous to the Sphere of Influence
4. Financial Ability of Agencies to Provide Services
5. Status of, and Opportunities for, Shared Facilities
6. Accountability for Community Service Needs, Including Governmental Structure and Operational Efficiencies
7. Any Other Matter Related to Effective or Efficient Service Delivery, as Required by Commission Policy

State Guidelines and Commission policies encourage cooperation among a variety of stakeholders involved in the preparation of a municipal service review. This MSR will analyze the Hills Ferry, Knights Ferry, and Patterson Cemetery Districts, with regards to existing and future services. The MSR will also provide a basis for each of the Districts and LAFCO to evaluate, and if appropriate, make changes to the Districts' Spheres of Influence.

Sphere of Influence Update Process

A special district is a government agency that is required to have an adopted and updated sphere of influence. Section 56425(g) of the CKH Act calls for spheres of influence to be reviewed and updated every five years, as necessary. Stanislaus LAFCO processes municipal service reviews and sphere of influence updates concurrently to ensure efficient use of resources. For rural special districts, which do not have the typical municipal-level services to review, this document will be used to determine what type of services each district is expected to provide and the extent to which they are actually able to do so. For these special districts, the spheres will delineate the service capability and expansion capacity of the agency, if applicable.

Spheres of Influence for the Hills Ferry, Knights Ferry, and Patterson Cemetery Districts were originally adopted by the Commission in 1984. The most recent update, adopted in 2008, proposed no changes to the Districts' SOIs. The current update serves to comply with Government Code Section 56425 and will reaffirm the SOIs for each district.

Sphere of Influence Determinations

In determining a sphere of influence (SOI) of each local agency, the Commission shall consider and prepare determinations with respect to each of the following factors, pursuant to Government Code Section 56425:

1. The present and planned land uses in the area, including agricultural and open-space lands.
2. The present and probable need for public facilities and services in the area.
3. The present capacity of public facilities and adequacy of public services that the agency provides or is authorized to provide.
4. The existence of any social or economic communities of interest in the area if the commission determines that they are relevant to the agency.
5. For an update of a sphere of influence of a city or special district that provides public facilities or services related to sewers, municipal and industrial water, or structural fire protection, the present and probable need for those public facilities and services of any disadvantaged unincorporated communities within the existing sphere of influence.

Authority

The three cemetery districts in Stanislaus County are public entities that were organized under the California Health and Safety Code Section 9000 et. seq. (formerly Sections 8890-9225). Under this code, cemetery districts are legally authorized to provide standard cemetery functions, including land acquisition, cemetery maintenance, and grounds keeping.

The Code also prescribes those who may be interred in district cemeteries. The deceased must have been a resident or taxpayer of the district, or former resident or taxpayer of the district who purchased lots prior to leaving the area or selling his/her land. Family members are eligible for interment, but are limited to spouses, parents, grandparents, children, and siblings.

In addition, a decedent not otherwise eligible may be interred in a district cemetery if private facilities are not available within a radius of 15 miles of the decedent's residence. Plots acquired by veterans associations may be used for the burial of any of their members, whether or not such member is a district resident. Also, the County may have buried in a district any indigent, if the district's trustees determine there is more space available than necessary to meet foreseeable needs of the district. However, most of the residents in Stanislaus County do not reside within the boundaries of the public cemeteries in the County and must be served by private, fraternal or religious cemeteries.

Classification of Services

As part of the original MSR completed for the Districts, each District provided a listing of services provided within their boundaries. The Cemetery Districts are authorized to provide the functions or classes of services as identified in this report. State Law requires that the Districts seek LAFCO approval in order to exercise any other latent powers not currently provided.

HILLS FERRY CEMETERY DISTRICT

Formation

The Hills Ferry Cemetery District was formed on January 24, 1938.

Location and Size

The District's boundary encompasses approximately 364,000 acres, located in Stanislaus and Merced Counties. The portion in Stanislaus County includes the City of Newman, the unincorporated community of Crows Landing and surrounding County areas. The portion in Merced County includes the City of Gustine, the unincorporated community of Santa Nella, and surrounding areas. The cemetery grounds are open to the public seven days a week.

The District's office is located at 1334 Stuhr Road, Newman, in western Stanislaus County. In addition, within the District boundaries is the Cottonwood Cemetery, located in Merced County. Although this cemetery has been closed for many years, the District continues to provide grounds keeping and maintenance services.

Sphere of Influence

The District's Sphere of Influence is coterminous with its current boundaries.

Governance

A three member "Board of Trustees", appointed by the Board of Supervisors, governs the District. Meetings are held on a quarterly basis at the District offices, located at 1334 Stuhr Road, Newman, CA.

Personnel

There are currently 3 full-time persons employed by the District. The District is currently in the process of hiring a full time office employee and part-time landscaper.

Support Agencies

The District maintains a positive collaborative relationship with other agencies, such as the: Patterson and Los Banos Cemetery Districts. The District is also a member of the California Association of Public Cemeteries and the Northern California Public Cemetery Association.

Funding Sources

The District's funding sources consist of a portion of the property taxes from land and homes in the area and fees for services that are provided by the District. The service fees are generated by sale of burial sites, burial expenses, and setting headstones. Service fees for non-residents are higher, as authorized by State law.

The District has an established fee schedule and endowment fund. The purpose of the endowment fund is to provide for future maintenance and care of the cemetery. The interest

earned on the principal of the fund may be used for the general operation of the District. The fund principal may never be spent.

Services

The District provides the following services, which are regulated by the California Health and Safety Code:

- Burials, setting of markers and sales of burial plots, vaults and liners.
- Grounds keeping and maintenance.
- An average of 100-120 internments per year.

Capacity

Growth within the District boundaries has increased steadily over the years, with the majority of growth occurring in the City of Newman. In order to keep up with future demand, the District began a planned expansion project, which will include 3,000 new sites in Phase 1 and approximately 20 acres of vacant and undeveloped land in Phase 2. In 2014, the District completed an expansion of 390 fill casket plots.

Municipal Service Review Determinations – Hills Ferry Cemetery District

The following provides an analysis of the seven categories or components required by Section 56430 for a Service Review for the Hills Ferry Cemetery District:

1. Growth and Population Projections for the Affected Area

The District is prepared to manage the growth that will occur in the coming years. Population growth is projected to occur in the cities of Newman and Gustine, corresponding with their respective General Plans.

2. The Location and Characteristics of Any Disadvantaged Unincorporated Communities Within or Contiguous to the Sphere of Influence

A review of available Census data indicates that the unincorporated community of Santa Nella, located in Merced County at the southerly end of the District, can be considered a disadvantaged unincorporated community.

3. Present and Planned Capacity of Public Facilities and Adequacy of Public Services, Including Infrastructure Needs or Deficiencies Related to Sewers, Municipal Water and Industrial Water, and Structural Fire Protection in Any Disadvantaged, Unincorporated Communities Within or Contiguous to the Sphere of Influence

At the present time, the District has both the ability and the capacity to serve its service area. An expansion area of approximately 20 acres is available at the Hills Ferry Cemetery site. The District is also planning on building a new office which is expected to be completed in the next 3 to 5 years.

Recently, the District hired a company to fly a drone over the cemetery in order to create a digital map. Currently, the District is making edits and will soon launch the map. The map will allow the public to look up loved ones, purchase plots, and leave digital memories.

As the District is not a provider of water, sewer, or fire protection services, it is not responsible for assuring that these services are adequately provided to disadvantaged unincorporated communities within or contiguous to the District.

4. Financial Ability of Agencies to Provide Services

The District attempts to maintain its rate schedule to charge the minimum fees possible. The District regularly monitors its fee/rate schedule in comparison to other nearby public cemetery districts (i.e. Los Banos, Patterson). The District is in sound financial shape and has the necessary resources to fund its services.

5. Status of, and Opportunities for, Shared Facilities

In the spirit of cooperation, the District has loaned its equipment to neighboring cemeteries when assistance has been requested. In return, the neighboring cemeteries have also assisted the District when help was needed. This type of cooperation assists the cemeteries in meeting the needs of its residents in a cost-effective manner.

6. Accountability for Community Service Needs, Including Governmental Structure and Operational Efficiencies

It is reasonable to conclude that the District can adequately serve the area under its jurisdiction. A three (3) member Board of Trustees, appointed by the Stanislaus County Board of Supervisors, governs the District. The District is subject to the provisions of the Brown Act requiring open meetings. No other relevant issues concerning this factor have been identified.

7. Any Other Matter Related to Effective or Efficient Service Delivery, as Required by Commission Policy

None.

Sphere of Influence Determinations- Hills Ferry Cemetery District

The following determinations for the Hills Ferry Cemetery District's Sphere of Influence update are made in conformance with Government Code Section 56425 and local Commission policy.

1. Present and Planned Land Uses in the Area, Including Agricultural and Open-Space Lands

The Hills Ferry Cemetery District's Sphere of Influence (SOI) includes approximately 364,000 acres, located in Stanislaus and Merced counties. The portion in Stanislaus County includes the City of Newman, the unincorporated communities of Crows Landing, Diablo Grande and surrounding County areas. The portion in Merced County includes the City of Gustine and unincorporated community of Santa Nella, along with surrounding unincorporated areas. Territory within and outside the District boundaries consists of rural and urbanized areas including agricultural, residential, commercial, industrial, and open space uses. While some areas are projected to experience more development and growth than other areas, the need for cemetery services will not diminish. In addition, the District does not have the authority to make land use decisions, nor does it have authority over present or planned land uses within its boundaries. The responsibility for land use decisions within the District boundaries is retained by the two counties and the cities of Newman and Gustine.

2. Present and Probable Need for Public Facilities and Services in the Area

The Hills Ferry Cemetery District is presently meeting the needs of the residents and has also procured facilities to prepare for future increased demands of its services for the next several years.

3. Present Capacity of Public Facilities and Adequacy of Public Services that the Agency Provides or is Authorized to Provide

The District currently has ample capacity within the cemetery and operates and maintains the cemetery in an efficient manner.

4. The Existence of Any Social or Economic Communities of Interest in the Area if the Commission Determines That They are Relevant to the Agency

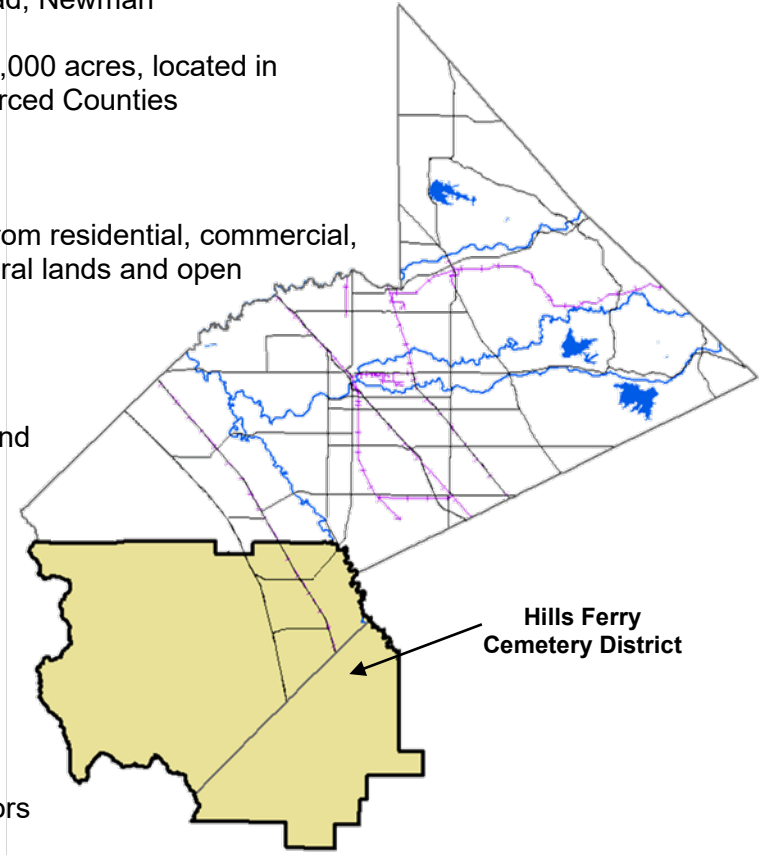
The cities of Newman and Gustine, as well as the unincorporated communities of Crows Landing, Diablo Grande, and Santa Nella are encompassed within the District's boundaries and Sphere of Influence.

5. For an Update of a Sphere of Influence of a City or Special District That Provides Public Facilities or Services Related to Sewers, Municipal and Industrial Water, or Structural Fire Protection, the Present and Probable Need for Those Public Facilities and Services of Any Disadvantaged Unincorporated Communities Within the Existing Sphere of Influence

As the District does not provide services related to sewers, municipal and industrial water or structural fire protection, this factor is not applicable.

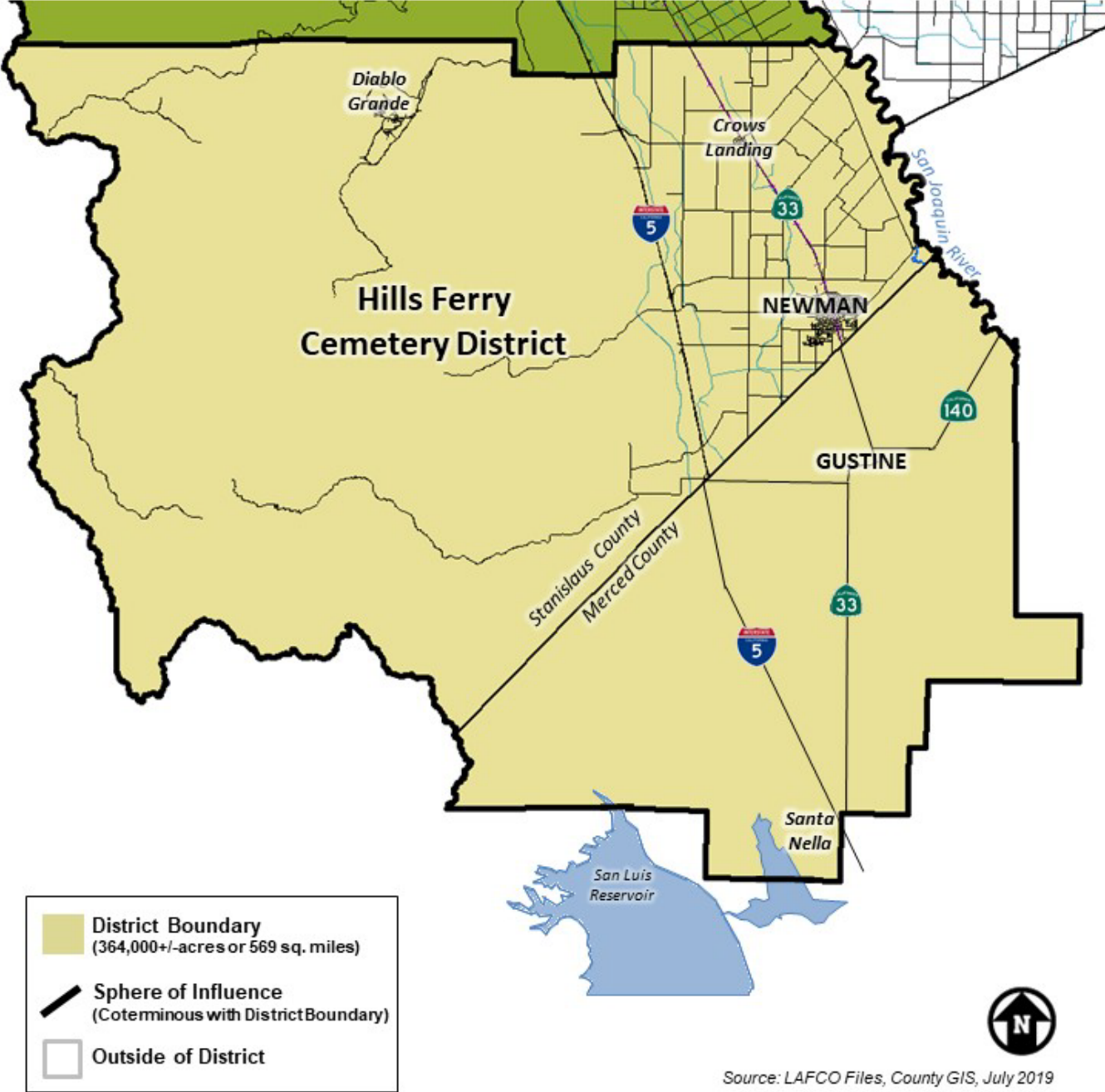
DISTRICT SUMMARY PROFILE

District:	HILLS FERRY CEMETERY DISTRICT
Location:	1334 W. Stuhr Road, Newman
Current Boundary:	Approximately 364,000 acres, located in Stanislaus and Merced Counties
Population:	20,980*
Land Use:	Varied land uses from residential, commercial, industrial, agricultural lands and open space.
Date of Formation:	January 24, 1938
Enabling Act:	California Health and Safety Code Section 9000 et. seq. (formerly Sections 8890-9225)
Governing Body:	Three member Board of Trustees, appointed by the Stanislaus County Board of Supervisors
Administration:	3 full-time employees.
District Services:	Burial services
Total Operating Budget (Actual):	FY 2023-2024 – \$615,007
Revenue Sources:	Property Tax, Sale of Burial Plots, and Service Fees



*Source: Hills Ferry Cemetery District

HILLS FERRY CEMETERY DISTRICT BOUNDARY AND SPHERE OF INFLUENCE



KNIGHTS FERRY CEMETERY DISTRICT

Formation

The Knights Ferry Cemetery District was formed on February 10, 1936.

Location and Size

The District's boundary encompasses approximately 18,500 acres, including the historic unincorporated community of Knights Ferry, in northeast Stanislaus County. The District's cemetery, known as the Oak Grove Cemetery, is located at the end of Cemetery Road in Knights Ferry. The district has installed a solar gate that is open to the public from 7 a.m. to 7 p.m.

Sphere of Influence

The District's Sphere of Influence extends beyond its current boundaries, encompassing approximately 24,000 additional acres.

Governance

A five-member Board of Trustees, appointed by the Board of Supervisors, governs the District. Meetings are held on an as-needed basis at various locations.

Personnel

The District does not employ any personnel, nor does it maintain an office on-site. The District relies on its volunteer Board members to run the day-to-day operations. One of the District's Trustees provides office space at their home, where the District has a designated phone line and answering machine. This same Trustee and/or Secretary also receives District phone calls and correspondence, thus mitigating the need for an office and paid personnel.

Support Agencies

The District maintains a positive collaborative relationship with other agencies, as necessary. These agencies include the Sheriff's Department and the Oakdale Rural Fire Protection District.

Funding Sources

The District's funding sources consist of a portion of the property taxes from land and homes in the area and fees for services that are provided by the District. The service fees are generated by the sale of burial sites. The District has an established fee schedule for collecting revenues for services performed. In addition, the District receives a small amount of funding from private donations; these funds are used to assist in the upkeep of the cemetery grounds.

The District has, over the years, made a concerted effort to cut costs to build up a reserve in order to make improvements to the cemetery grounds. Past improvements include installation of a new well and water system. The District continues to make improvements to the exterior and interior roadway access to the cemetery.

Services

The District is a “non-maintenance” district and provides for the sale of burial plots only, which are recorded as deeded property. Families of the interned are responsible for the upkeep of the burial sites. The District does, however, contract out for grounds keeping services on an as-needed basis. On the average, the District performs an estimated 8 to 12 internments per year.

Capacity

The District currently has undeveloped gravesite space available within its immediate boundaries. In addition, there is approximately 5 acres of vacant and undeveloped land to meet the burial needs of the district for many years to come.

Municipal Service Review Determinations – Knights Ferry Cemetery District

The following provides an analysis of the seven categories or components required by Section 56430 for a municipal service review for the Knights Ferry Cemetery District:

1. Growth and Population Projections for the Affected Area

The District serves an area that is unincorporated and agricultural, with the majority of population occurring in and around the unincorporated community of Knights Ferry. According to the County's General Plan, it is not anticipated that Knights Ferry will experience significant growth in the coming years.

2. The Location and Characteristics of Any Disadvantaged Unincorporated Communities Within or Contiguous to the Sphere of Influence

Upon review of available Census data, there are no known disadvantaged unincorporated communities within or contiguous to the District's Sphere of Influence.

3. Present and Planned Capacity of Public Facilities and Adequacy of Public Services, Including Infrastructure Needs or Deficiencies Related to Sewers, Municipal Water and Industrial Water, and Structural Fire Protection in Any Disadvantaged, Unincorporated Communities Within or Contiguous to the Sphere of Influence

At the present time, the District has both the ability and the capacity to serve its service area. As the District does not provide water, sewer, or fire protection services, it is not responsible for assuring that these services are adequately provided to communities within the District's boundaries.

4. Financial Ability of Agencies to Provide Service

The District has had some recent expenditures, including squirrel abatement and a new pump for a well. The District is currently planning to remove dead cedar trees from the cemetery site.

The District has a limited budget and relies on volunteers for much of its operations. According to the District's 2023-2024 Budget, the District is expected to have approximately \$29,000 in expenses and only approximately \$10,000 in total income. However, over all the District appears to have adequate financial resources to fund limited services.

5. Status of, and Opportunities for, Shared Facilities

The District does not share resources with other agencies at this time, as their assets are limited.

6. Accountability for Community Service Needs, Including Governmental Structure and Operational Efficiencies

It is reasonable to conclude that the District can adequately serve the areas under its jurisdiction. A five (5) member Board of Trustees, appointed by the Stanislaus County Board of Supervisors governs the District. The Board conforms to the provisions of the

Brown Act requiring open meetings. No other relevant issues concerning this factor have been identified.

7. Any Other Matter Related to Effective or Efficient Service Delivery, as Required by Commission Policy

None.

Sphere of Influence Determinations: Knights Ferry Cemetery District

The following determinations for the Knights Ferry Cemetery District's Sphere of Influence update are made in conformance with Government Code Section 56425 and local Commission policy.

1. Present and Planned Land Uses in the Area, Including Agricultural and Open-Space Lands

The Knights Ferry Cemetery District's Sphere of Influence (SOI), including the District's boundary, encompasses approximately 42,500 acres. This includes the historic unincorporated community of Knights Ferry and surrounding County areas. Territory within and outside the District boundaries consists mostly of agricultural and rural residential areas. The County's General Plan expects very little growth or development in this portion of the County. In addition, the District does not have the authority to make land use decisions, nor does it have authority over present or planned land uses within its boundaries. The responsibility for land use decisions within the District boundaries is retained by the County.

2. Present and Probable Need for Public Facilities and Services in the Area

The Knights Ferry Cemetery District is presently meeting the needs of the residents and has five acres of additional vacant and undeveloped gravesite space to prepare for future needs of its residents for the coming years.

3. Present Capacity of Public Facilities and Adequacy of Public Services that the Agency Provides or is Authorized to Provide

The District currently has adequate capacity within the cemetery and operates and maintains the cemetery in an efficient manner relying on volunteer board members and families of the interred for upkeep of burial sites.

4. The Existence of Any Social or Economic Communities of Interest in the Area if the Commission Determines That They are Relevant to the Agency

The unincorporated community of Knights Ferry is encompassed by the district's boundaries and Sphere of Influence.

5. For an Update of a Sphere of Influence of a City or Special District That Provides Public Facilities or Services Related to Sewers, Municipal and Industrial Water, or Structural Fire Protection, the Present and Probable Need for Those Public Facilities and Services of Any Disadvantaged Unincorporated Communities Within the Existing Sphere of Influence

As the District does not provide services related to sewers, municipal and industrial water or structural fire protection, this factor is not applicable.

DISTRICT SUMMARY PROFILE

District: **KNIGHTS FERRY CEMETERY DISTRICT**

Location: 17201 Cemetery Road, Knights Ferry

Current Boundary: Approximately 18,500 acres (with an additional 24,000+/- acres outside the District's current boundaries but within its Sphere of Influence)

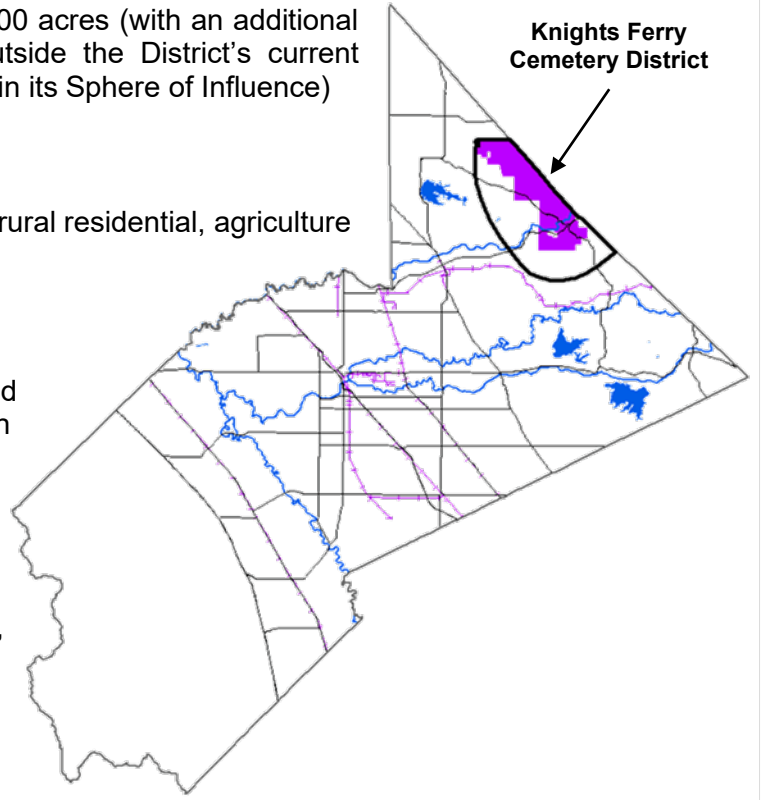
Population: 656*

Land Use: Primarily historical, rural residential, agriculture and open space

Date of Formation: February 10, 1936

Enabling Act: California Health and Safety Code Section 9000 et. seq. (formerly Sections 8890-9225)

Governing Body: A five member "Board of Trustees", appointed by the Stanislaus County Board of Supervisors.



Administration: There are no paid staff members.

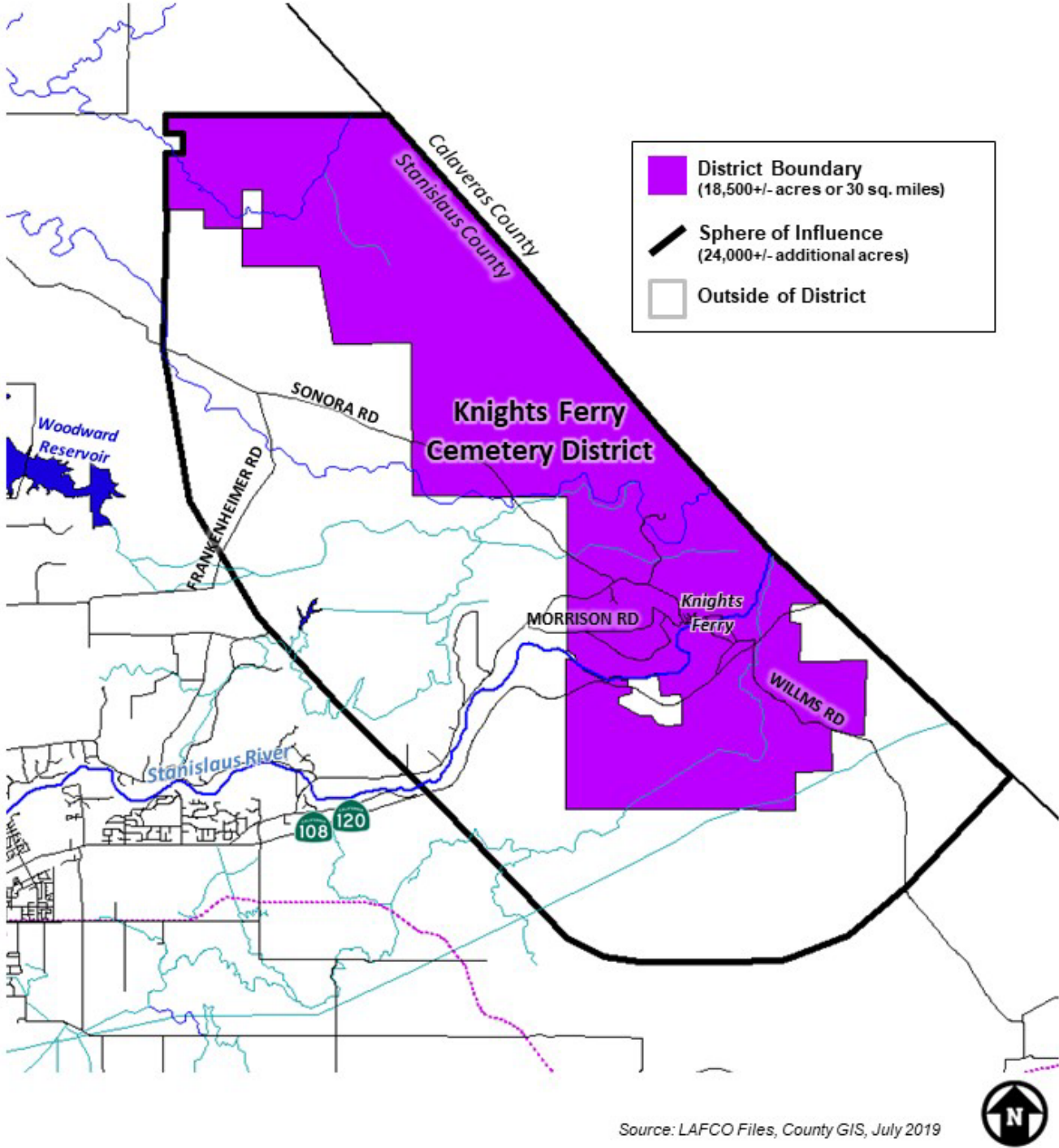
District Services: Sale of burial plots

Total Expenses: FY 2023-2024 – \$28,950

Revenue Sources: Property Tax, Sale of Burial Plots

*Source: Estimated using 2020 Census Data

KNIGHTS FERRY CEMETERY DISTRICT BOUNDARY AND SPHERE OF INFLUENCE



PATTERSON CEMETERY DISTRICT

Formation

The Patterson Cemetery District was formed on November 27, 1944.

Location and Size

The District's boundary encompasses approximately 143,000 acres on the west side of Stanislaus County, including the City of Patterson, the unincorporated communities of Westley and Grayson and surrounding unincorporated county areas.

The Patterson Cemetery is located at 10800 Highway 33, north of Patterson, and is also the site of the District office. The Grayson Cemetery, located at the corner of Grayson and River Roads, in the unincorporated community of Grayson is also located within the boundaries of the District. Although it has been closed for many years, the District continues to provide grounds keeping and maintenance services on the site.

Sphere of Influence

In 1984, the Sphere of Influence established for the District included a potential expansion area of approximately 7,000 acres, located east of Patterson, just east of the San Joaquin River.

Governance

A five-member Board of Trustees appointed by the Stanislaus County Board of Supervisors governs the District. Meetings are held on the second Wednesday of each month at 8:00 a.m., at the Patterson Cemetery Board Room at 10800 Highway 33. The District complies with the Brown Act at their meetings and posts their monthly agenda at the above address.

Personnel

The District employs three full-time personnel. The District also utilizes volunteer labor on an as-needed basis.

Support Agencies

The District maintains a positive collaborative relationship with other agencies, as necessary. The District is also a member of the California Association of Public Cemeteries and the Public Cemetery Alliance.

Funding Sources

The District's funding sources consist of a portion of the property taxes from land and homes in the area and fees for services that are provided by the District. The service fees are generated by selling burial sites, burial expenses, and setting headstones. Service fees for non-residents are higher, as per state law.

The District has an established fee schedule and endowment fund. The purpose of the endowment fund is to provide for future maintenance and care of the cemetery. The interest earned on the principal of the fund may be used for the general operation of the District. The fund principal may never be spent.

Services

The District provides the following services within its service area:

- Burials
- Setting Markers and Marker Foundations
- Performs on the average 90 internments per year.

Capacity

The District has adequate space to meet the burial needs of its district for several decades. The cemetery currently has several hundred undeveloped gravesites, as well as approximately 11 acres of vacant and undeveloped land, which can be considered for future development.

Municipal Service Review Determinations – Patterson Cemetery District

The following provides an analysis of the seven categories or components required by Section 56430 for a municipal service review for the Patterson Cemetery District:

1. Growth and Population Projections for the Affected Area

The majority of growth in the District is projected to occur in the City of Patterson, consistent with the City's General Plan. Based on limited availability of public services, little growth is projected to occur in the unincorporated areas that the District covers. The District has approximately 11 acres of expansion area in preparation for future growth.

2. The Location and Characteristics of Any Disadvantaged Unincorporated Communities Within or Contiguous to the Sphere of Influence

Grayson and Westley, both located within the boundaries and Sphere of Influence of the District, are considered disadvantaged unincorporated communities according to available Census data for the area.

3. Present and Planned Capacity of Public Facilities and Adequacy of Public Services, Including Infrastructure Needs or Deficiencies Related to Sewers, Municipal Water and Industrial Water, and Structural Fire Protection in Any Disadvantaged, Unincorporated Communities Within or Contiguous to the Sphere of Influence

At the present time, the District has both the ability and the capacity to serve its service area. As the District does not provide water, sewer, or fire protection services, it is not responsible for assuring that these services are adequately provided to disadvantaged unincorporated communities within the District's boundaries.

4. Financial Ability of Agencies to Provide Services

Currently, the District appears to have adequate financial resources to fund sufficient levels of service within the District's boundaries. The District attempts to maintain its rate schedule to charge the minimum fees possible and regularly monitors its fee/rate schedule in comparison to other nearby public cemetery districts.

5. Status of, and Opportunities for, Shared Facilities

The District has loaned its equipment to neighboring cemeteries, such as the Hills Ferry Cemetery District, when assistance has been requested. In return, the neighboring cemeteries have also assisted the District when help was needed. This type of cooperation assists the cemeteries in meeting the needs of its residents in a cost-effective manner.

6. Accountability for Community Service Needs, Including Governmental Structure and Operational Efficiencies

It is reasonable to conclude that the District can adequately serve the areas under its jurisdiction. A five-member Board of Trustees, appointed by the Board of Supervisors, governs the District. The Board conforms to the provisions of the Brown Act requiring open meetings. No other relevant issues concerning this factor have been identified.

7. Any Other Matter Related to Effective or Efficient Service Delivery, as Required by Commission Policy

None.

Sphere of Influence Determinations – Patterson Cemetery District

The following determinations for the Patterson Cemetery District's Sphere of Influence update are made in conformance with Government Code Section 56425 and local Commission policy.

1. Present and Planned Land Uses in the Area, Including Agricultural and Open-Space Lands

The Patterson Cemetery District's Sphere of Influence (SOI) includes approximately 150,000 acres, including the City of Patterson, the unincorporated communities of Grayson and Westley, as well as surrounding county areas. The current SOI includes an approximately 7,000-acre expansion area outside the current District boundary, east of Patterson, just west of the San Joaquin River. Territory within and outside the District boundaries consists of rural and urban areas including, residential, commercial, industrial, agricultural, and open space uses. The District does not have the authority to make land use decisions, nor does it have authority over present or planned land uses within its boundaries. The responsibility for land use decisions within the District boundaries is retained by the County and the City of Patterson.

2. Present and Probable Need for Public Facilities and Services in the Area

The District is presently meeting the needs of the residents and has additional vacant and undeveloped gravesite space to prepare for future needs of its residents for many years.

3. Present Capacity of Public Facilities and Adequacy of Public Services that the Agency Provides or is Authorized to Provide

The District currently has adequate capacity within the cemetery and operates and maintains the cemetery in an efficient manner.

4. The Existence of Any Social or Economic Communities of Interest in the Area if the Commission Determines That They are Relevant to the Agency

The City of Patterson and the unincorporated communities of Westley and Grayson can be considered communities of interest within the District's boundaries.

5. For an Update of a Sphere of Influence of a City or Special District That Provides Public Facilities or Services Related to Sewers, Municipal and Industrial Water, or Structural Fire Protection, the Present and Probable Need for Those Public Facilities and Services of Any Disadvantaged Unincorporated Communities Within the Existing Sphere of Influence

As the District does not provide services related to sewers, municipal and industrial water or structural fire protection, this factor is not applicable.

DISTRICT SUMMARY PROFILE

District: **PATTERSON CEMETERY DISTRICT**

Location: 10800 Highway 33, Patterson, CA 95363

Current Boundary: Approximately 143,000 acres (with an additional 7,000+/- acres outside the District's current boundaries but within its Sphere of Influence)

Population: 29,500*

Land Use: Varied land uses from residential, commercial, industrial, agricultural lands and open space.

Date of Formation: November 27, 1944

Enabling Act: California Health and Safety Code Sections 9000 et. seq. (formerly Sections 8890-9225)

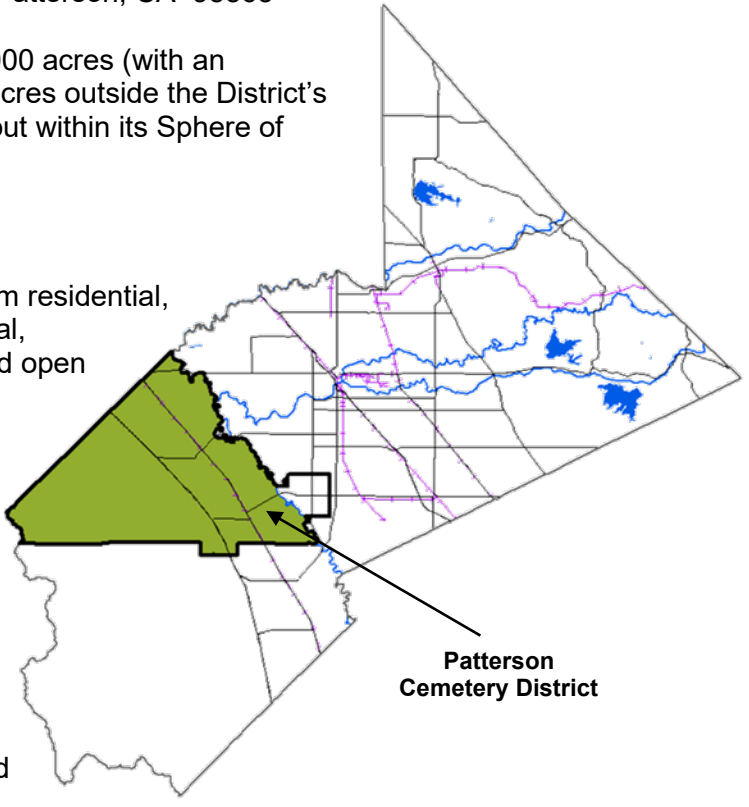
Governing Body: 5 Trustees appointed by the Stanislaus County Board of Supervisors.

Administration: There are 3 paid staff members.

District Services: Burial services

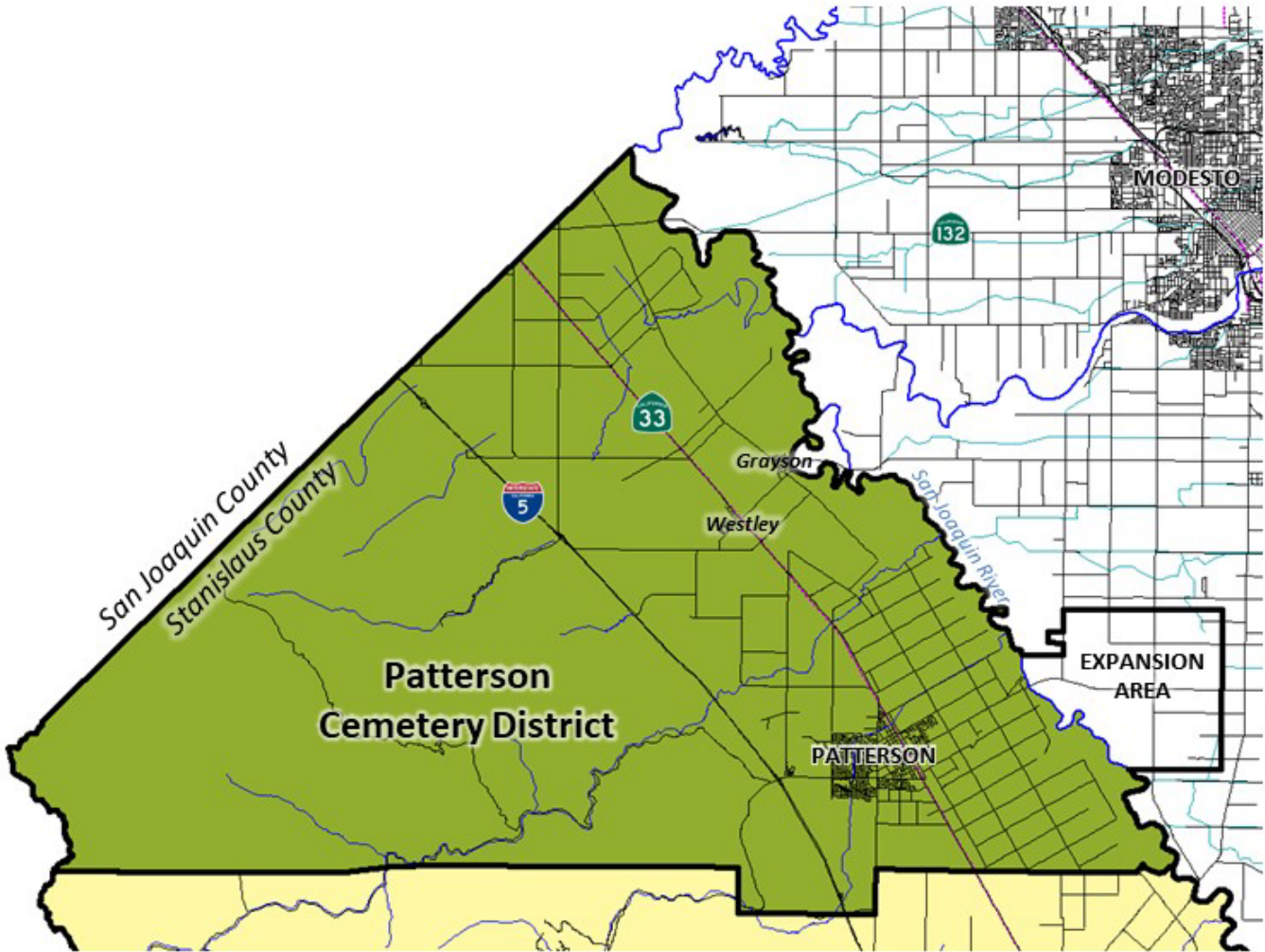
Total Expenditures: FY 2023-2024 – \$581,607

Revenue Sources: Property Tax, Sale of Burial Plots, and Service Fees



*Source: Estimated using 2020 Census Data

PATTERSON CEMETERY DISTRICT BOUNDARY AND SPHERE OF INFLUENCE



	District Boundary (143,000+/- acres or 223 sq. miles)
	Sphere of Influence (7,000+/- acres additional area)
	Outside of District



Source: LAFCO Files, County GIS, July 2019

REFERENCES

1. California Associate of Public Cemeteries. Website (<http://www.capc.info/index.html>). Accessed March 3, 2024.
2. California Health and Safety Code Sections 9000 et. seq. (formerly Sections 8890-9225).
3. Hills Ferry Cemetery District. *Budget for 2023-2024*.
4. Knights Ferry Cemetery District. *Budget 2023-2024*.
5. Patterson Cemetery District. *Annual Budget 2023-2024*.
6. Stanislaus LAFCO. *Municipal Service Review and Sphere of Influence Update for the Hills Ferry, Knights Ferry, and Patterson Cemetery Districts*. August 27, 2019.
7. United States Census Bureau. 2020.